

MOTORBOATS **REDEFINED**

for a sustainable future



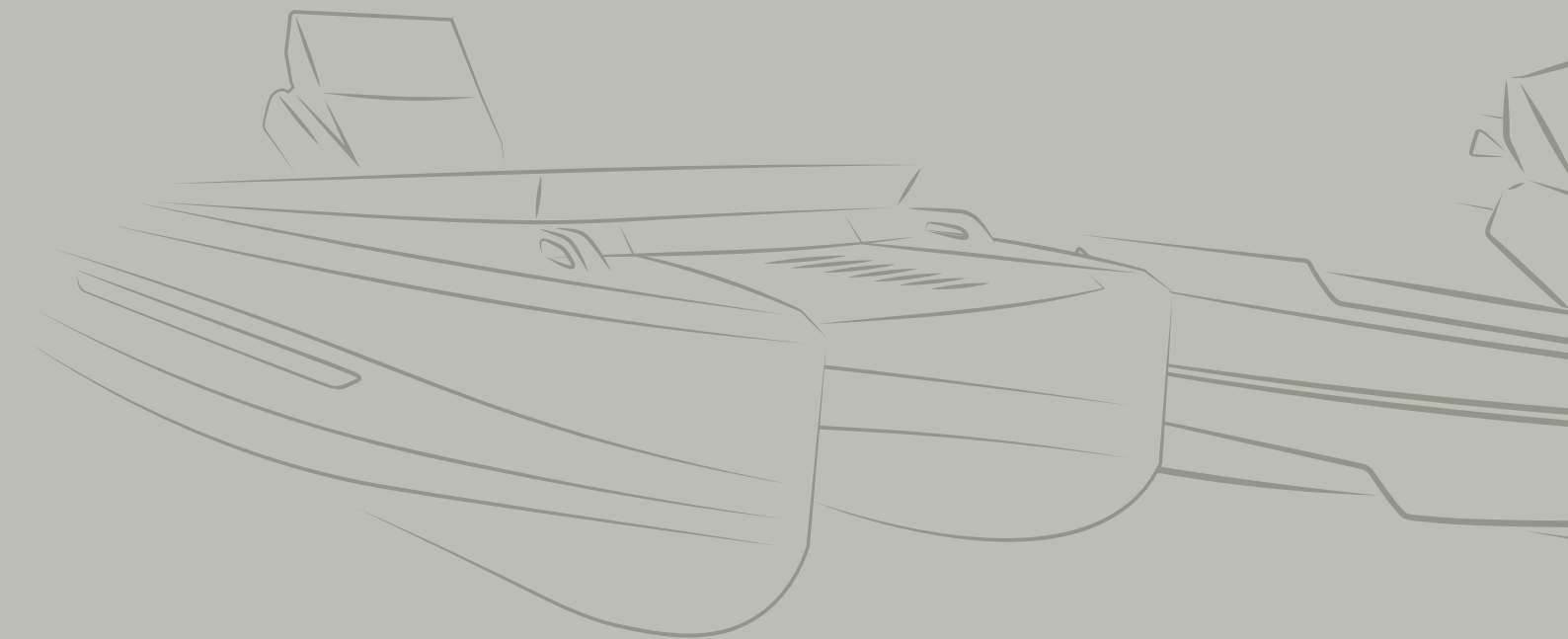


MOTORBOATS REDEFINED for a sustainable future

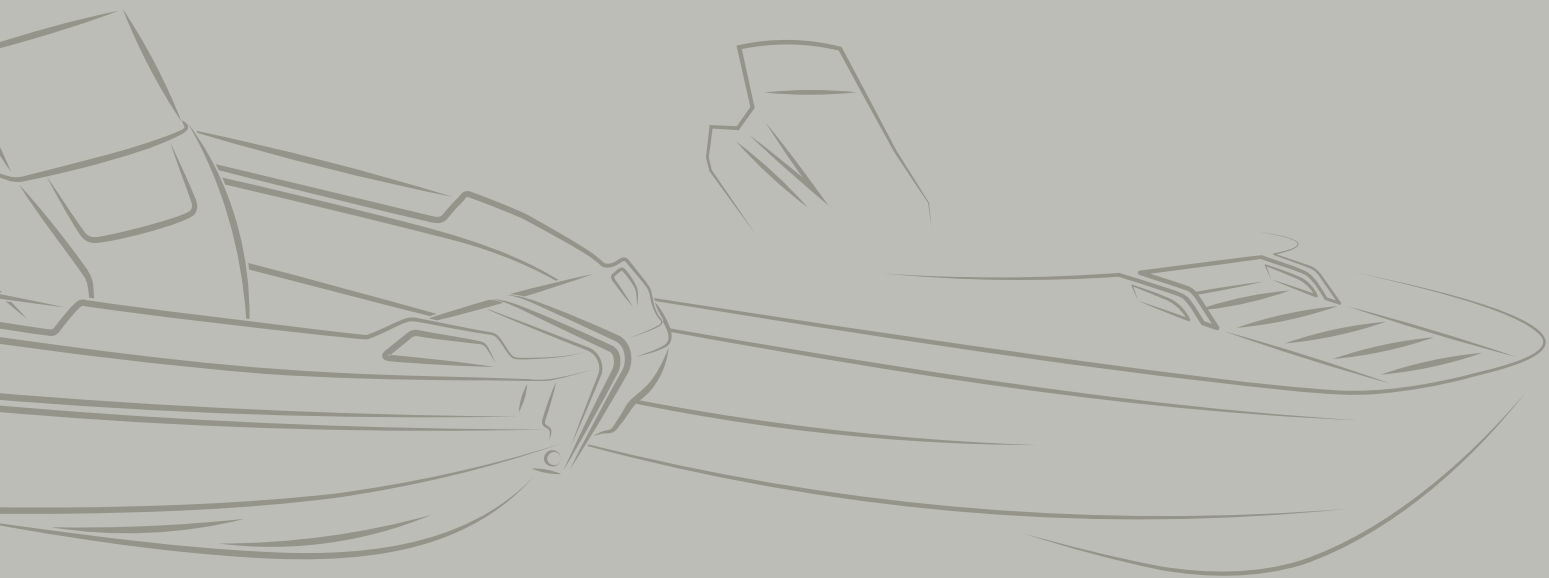
Polyethylene boats are easy to **handle, 100% recyclable, highly impact resistant and have low maintenance costs.** If against all odds the boat is damaged, it may also be easily welded in the exact colour match. These are just some of the benefits that are guaranteed to impress you.

With **over 50 years of experience**, ROTO stands as a **leading European manufacturer in rotational molding technology**, consistently **delivering quality and sustainability in every product.**

More about the company at:
www.rotto.eu & nautica.rotto.eu



**Discover Roto Nautica's
two main concepts:**



MONO HULL HYDRA
DOUBLE HULL KORKYRA

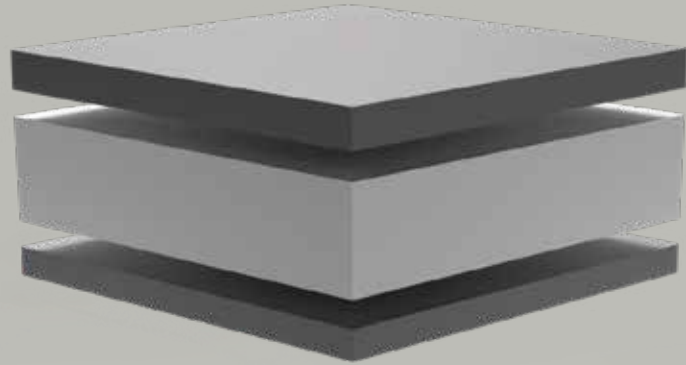
Designed for various water activities, experiences and unforgettable adventures on rivers, lakes and seas.

Innovative 3-layer technology:

Super linear Polyethylene

Polyethylene foam

Linear Polyethylene



This multi-layered technology ensures exceptional hull performance with outstanding **rigidity, high impact resistance, and lightweight.**

This advanced construction offers a range of benefits:

UV Stability: Built to withstand harsh environmental conditions.

Low Maintenance: Spend more time on the water and less on the upkeep.

Durable: Designed to last, even in the toughest conditions.







HYDRA 450

Stable. Reliable. Easy to handle.

The “Hydra450” motorboat is setting **new standards** in the rotational molding boat industry.

Its ergonomic design ensures exceptional versatility, making it ideal for **families, fishermen, professionals** like **firefighters** and **rescue** divers and sailing **school instructors** seeking a reliable and safe training vessel.

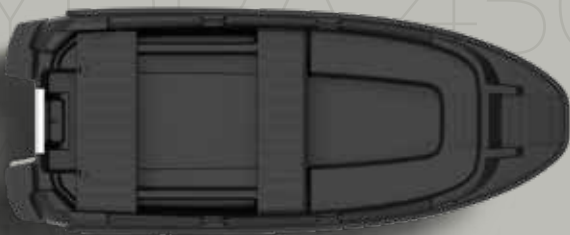
The **Hydra450** is available in several versions with a side console, central console or without a console.

It is a **one-piece** rotationally molded boat, manufactured in **3-layer sandwich** technology.

This unique production concept ensures the hull’s exceptional **rigidity, high impact resistance,** and **lightweight** properties.

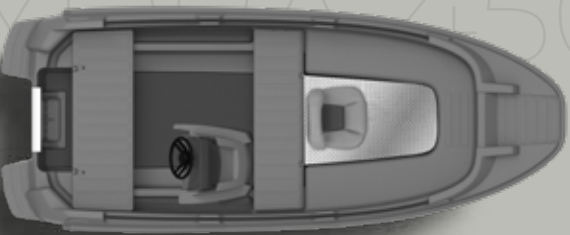
Compared to the boats made in GRP technology, polyethylene boats can use engines with less power to achieve same **speed** and **performance**. The 3-layer polyethylene material provides also **amazing buoyancy, UV stability,** and has **low maintenance costs**.

“**Hydra450**” motorboats are **100% recyclable** and also have an option to be made from **recycled materials**.



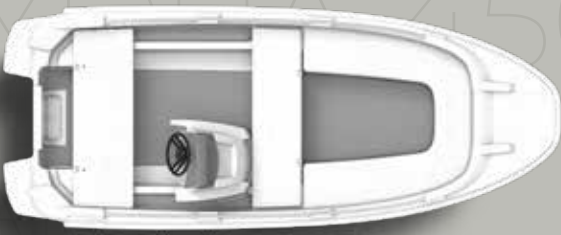
HYDRA 450 BASIC

is suitable for anyone who is looking for an **entry-level** model in the world of motorboats (rentals, fish farm workers, marina staff, etc..). The basic model version has no console and allows outboard engines up to 20 HP.



HYDRA 450 FISHING

is the perfect choice for competitive fishing on large waters. It is ideal for both **recreational** and **tournament fishing**. With high load capacity, lightweight design, exceptional stability, and modular versatility it is the ultimate fishing partner that you can rely on.



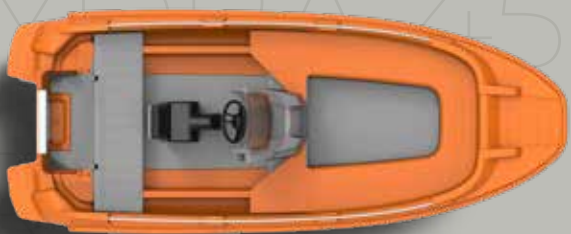
HYDRA 450 FAMILY

is the most popular boat version. It is suitable for anyone looking for a safe and reliable vessel used for **daily cruises** and **escapes into nature**. It is equipped with a side console and can be customized with additional features, including a sundeck box, bimini, T-top and cushions.



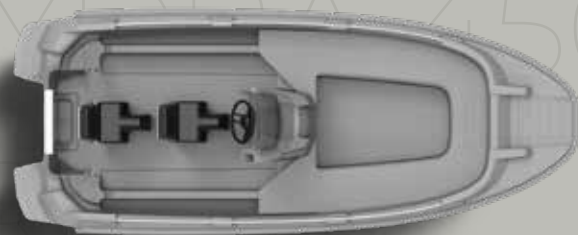
HYDRA 450 RESCUE

is designed specifically for firefighters or scuba divers to execute **water rescues**. "Its red base color is widely recognized for emergency use." Optionally it can also be certified with module B+F.



HYDRA 450 XR1

features a central console with a jockey seat for an elevated driving position, ensuring **perfect balance** and **exceptional comfort**.

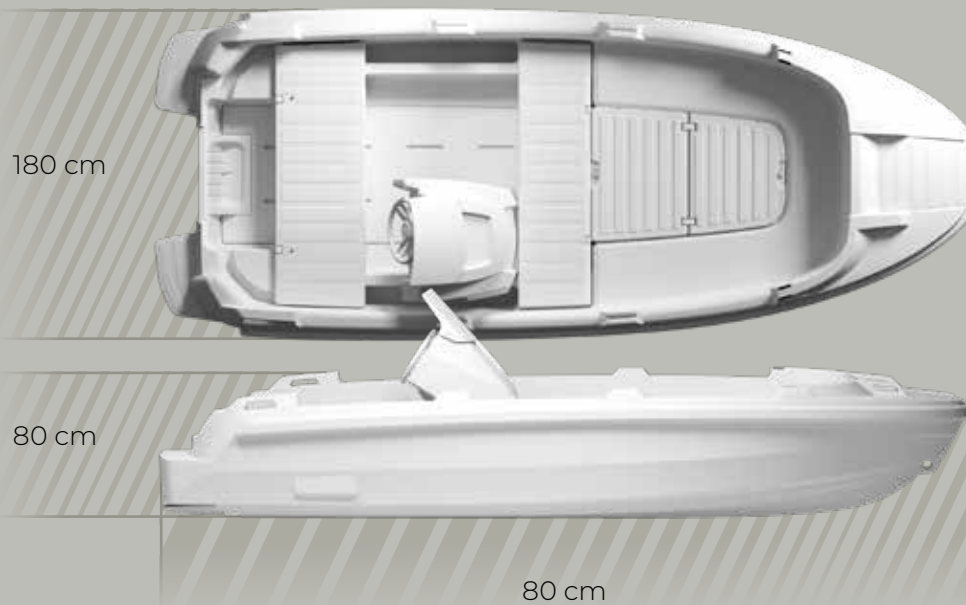


HYDRA 450 XR2

is an upgrade of the XR1, featuring two jockey seats for a unique driving experience. This model ensures **superior balance** and **comfort** for both the driver and the passengers.







Basic colours

- Granite white 
- Silver grey 
- Anthracite grey 
- Midnight black 
- Scuderia red 
- Lime green 
- PEcycled 
- Neon orange 

Premium colours

- Magenta pink 
- Neon yellow 
- Navy blue 
- Tiffany blue 
- Light blue 



up to 20 HP
without
steering console



Weight:
Basic - **281 kg** (without console)
Family, Fishing, Rescue - **298 kg**
XR1, XR2 - **270 kg** (including jockey seats)



6-60 HP
with steering
console



Capacity:
Certification class **C = 5**
Certification class **D = 7**

C / D
boat category



Serial Equipment

	HYDRA 450 BASIC	HYDRA 450 FISHING	HYDRA 450 FAMILY	HYDRA 450 RESCUE	HYDRA 450 XR1	HYDRA 450 XR2
Rear storage box "Bench"	+	+	+	+	+	
Central storage box "Bench"	+	+	+	+		
Side Console incl. windshield and steering wheel		+	+	+		
Central console incl. windshield and steering wheel					+	+
Jockey seat					+	+ (2pcs)
Sundeck box with plate		+				
T-top - stainless steel				+		

Optional equipment

	Family package			Family package	
Sundeck box			Anchor kit		
Fuel tank 35 l designed for front bench			Console cover		
Fuel tank 30 l designed for Sundeck box			Navigation LX – NAV 7"		
Bimini	+		Radio & Speakers		
T-top stainless steel or black coated aluminium			Table		
Trailer		Cushion options	Cushion - central bench	+	
Foldable Sundeck plate	+		Cushion - rear bench	+	
Stainless steel backrest	+		Cushion front set - Left, Right	+	
Anchor light (white)			Cushion Sundeck – foldable	+	
Navigation lights			Pillow set		
Ladder	+		Stainless steel backrest incl. Cushion	+	

OPTIONAL EQUIPMENT for side console version



1 Targa



2 Fuel tank 35 l



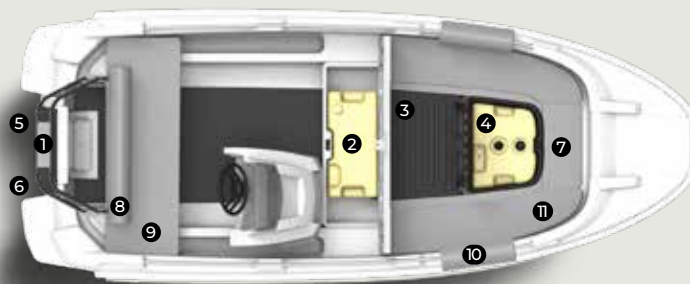
3 Sundeck box



4 Fuel tank 30 l for sundeck box

5 Ladder

6 Navigation lights



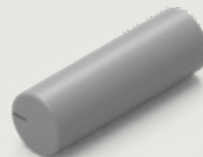
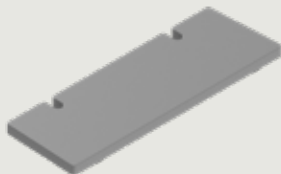
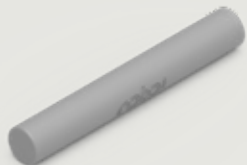
7 Cushion Sundeck

8 Backrest with cushion

9 Cushion rear & front bench

10 Pillow set

11 Cushion front set - Left, Right



OPTIONAL EQUIPMENT for central console version



1 Targa



2 Jockey seat



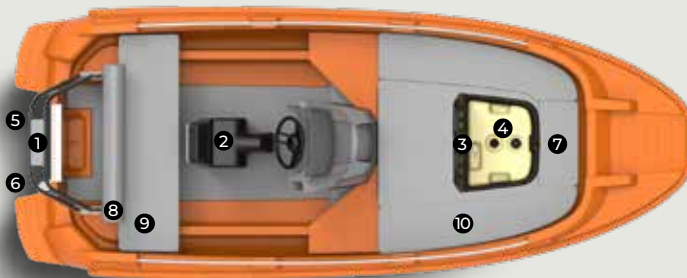
3 Sundeck box



4 Fuel tank 30 l for sundeck box

5 Ladder

6 Navigation lights

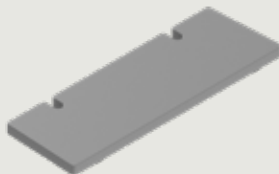
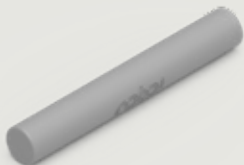


7 Cushion Sundeck

8 Backrest with cushion

9 Cushion rear bench

10 Cushion front set - Left, Right







HYDRA530

A new era in boating

Discover unparalleled boating performance with the **HYDRA530**, the first mono hull polyethylene boat featuring **air step technology**. The innovative air step technology enhances acceleration, **top speed**, and **stability**.

Combining modern elegance, resilience, and top-tier performance, this boat is perfect for both exhilarating adventures and peaceful cruises.

Air Step Technology

Explore the “HYDRA 530”

With air step technology, the Hydra 530 enables faster acceleration, a higher top speed and better stability on the water.

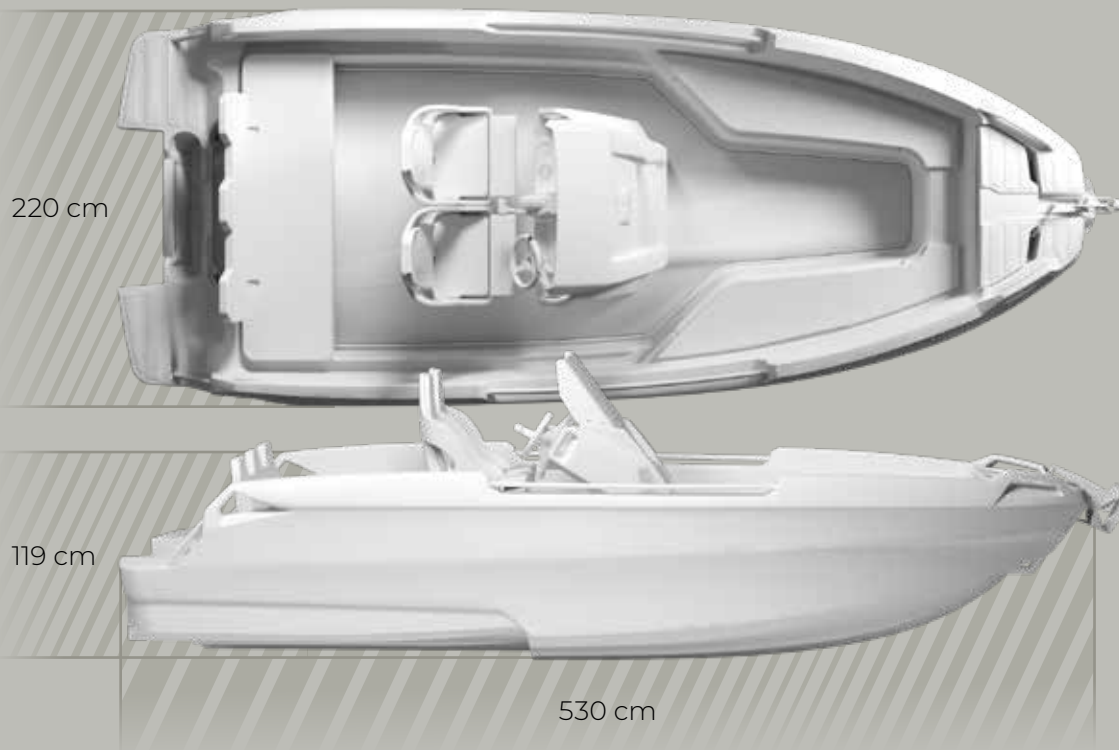
A step beneath the hull creates a cushion of air, smoothing the ride and reducing friction.

Improving fuel efficiency and range as well ensures a safe and thrilling experience on the water.









gasoline up
to 100 hp



Weight:
480 kg



Capacity:
Certification class C: **8 people**
Certification class D: **10 people**

C / D
boat category

Basic colours

- Granite white 
- Silver grey 
- Anthracite grey 
- Midnight black 
- Scuderia red 
- Lime green 
- Neon orange 

Premium colours

- Metallic silver 

Standard Equipment:		Optionally equipment	Family package
Central console incl. windshield and steering wheel		Windshield protection	
Front storage boxes Left, Right “Bench”		Console cover	
Rear storage box “Bench”		Navigation LX – NAV 9”	
Driver & co-driver seats		Radio & Speakers	
Optionally equipment	Family package	PermaTEAK flooring	
Anchor kit		Table (incl. base & pillar)	
Anchor electrical winch		Trailer	
Anchor light (white)		Shower set	
Sundeck box	Cushion options	Cushion front bench Left, Right – set	+
Fuel tank 50 lit incl. sensor		Cushion – front	+
Bimini		Cushion - rear bench	+
T – top		Cushion sundeck box – foldable	
Navigation lights		Stainless steel backrest incl. Cushion	+
Ladder		Cushions backrest Front Left, Right - set	+

Combines and t.



Air step technology



Fast, stable, easy to handle



3-layer Sandwich technology



Low maintenance



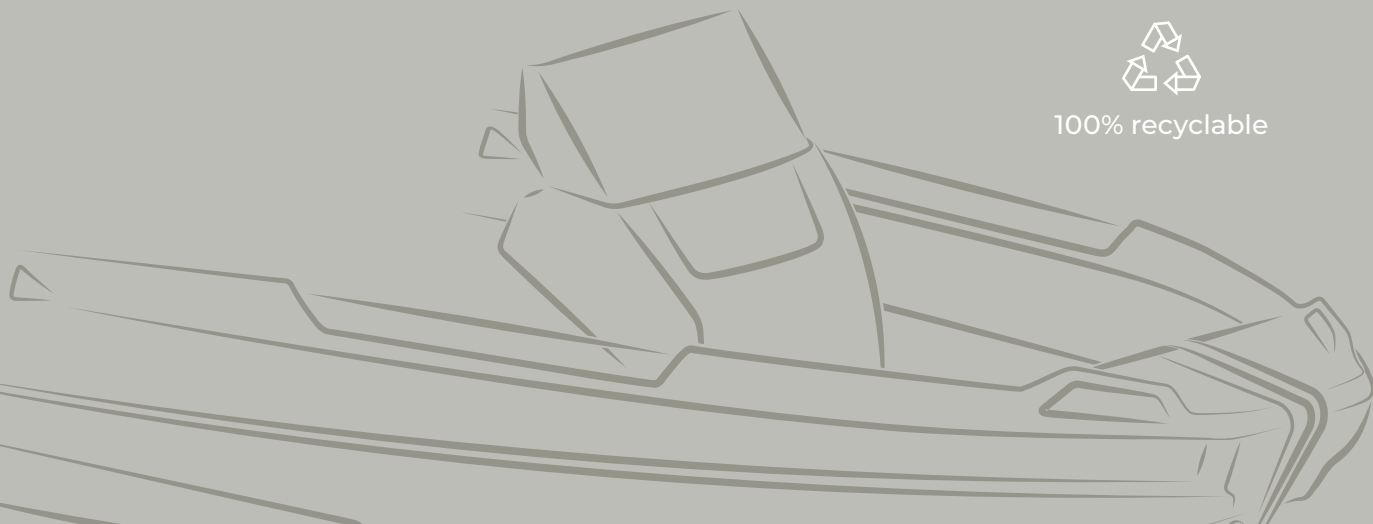
High impact resistant



Lightweight



100% recyclable



KORRY



R A G E S O

KORKYRA 650

Designed for confidence.

Engineered for superior stability.

The design of the “Korkyra650” catamaran is elegant, modern and expresses confidence on the water. This vessel will excite both, experienced sailors and adventurous beginners.

“**Korkyra**” catamarans are made from “multi-hull rotationally molded floaters” connected with the rigid aluminum sandwich platform. The combined structure enables efficient shipping in containers in disassembled form.

The main floaters are manufactured using unique 3-layer technology. The high-performance double hull is characterized by exceptional rigidity, high impact resistance and low weight.

All components of the catamaran are UV-resistant and fully recyclable at the end of their lifecycle, ensuring sustainability without compromising performance.

Explore the "KORKYRA650"

The Korkyra catamaran have been designed and engineered to provide the ultimate performance on the water. Whether you're looking for sunset cruises or weekend getaways, these catamarans are designed to offer a variety of experiences.

Korkyra 650 promises an unrivalled experience to create lasting memories and redefine your relationship with sailing.



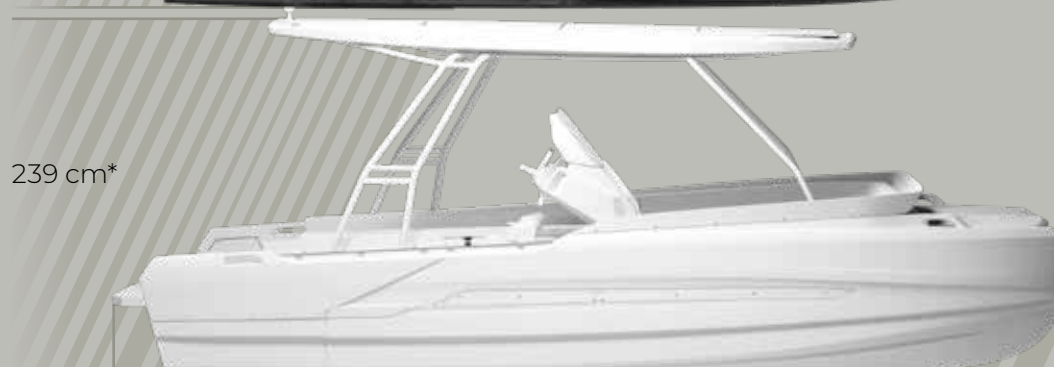


Korkyra 650

Korkyra 650 Pro
front loading platform







650 cm



Electric engine
up to 2 x 20 kW



Weight:
standard: **953 kg**
with loading platform: **978 kg**

Solar power:
up to 1 kWh



Gasoline engine
up to 2 x 60 HP



Capacity:
Certification class **C = 10**
Certification class **D = 12**

C / D
boat category

* incl. Hardtop or T top

Basic colours

- Light grey 
- Scuderia red 
- Lime green 
- Neon orange 


Standard Equipment:		Optionally equipment	Family package
Central console incl. windshield and steering wheel		Windshield protection	
T - top		Navigation LX – NAV 9"	
Ladder		Radio & Speakers	
Storage boxes		Anchor kit	+
Driver & co-driver seats		Anchor light	
Optionally equipment	Family package	Table (incl. base & pillar)	+
Navigation lights		Refrigerator	
MarineMat flooring	+	Trailer	
Hardtop – short	+	Console cover	
Hardtop – long		Shower set	
Bimini for T - top	Cushion options	Cushion set	+
Solar panels – 1 kWh		Rear backrest Left ,Right	+
Fuel tank 50 lit incl. sensor		Adjustable seat »Bench«	

+ (2pcs)









EXPLORE the “KORKYRA650 PRO” with a loading platform

The KORKYRA650 Pro with a loading platform is designed for ultimate convenience. Its innovative design ensures **smooth boarding for passengers** and **easy handling of cargo**, making it ideal for both **personal and professional use**.

While designing the catamaran with the front loading platform, we concepted an open deck for **Scuba divers** and **people with disabilities**. With accessibility and inclusivity at its core, this catamaran is perfect for diverse usage, from leisure cruises to transport services.

Experience effortless functionality and comfort with every journey.



“KORKYRA650” - Sustainable Power on the Water

The Korkyra650 with a hardtop and **solar panels** transforms the vessel into an energy self-sufficient power station.

Its electric propulsion system ensures quiet, **emission-free cruising**, allowing you to connect with your surroundings while preserving the environment.

Cruise efficiently and preserve the beauty of our seas, rivers and lakes for future generations.

100% ELECTRIC

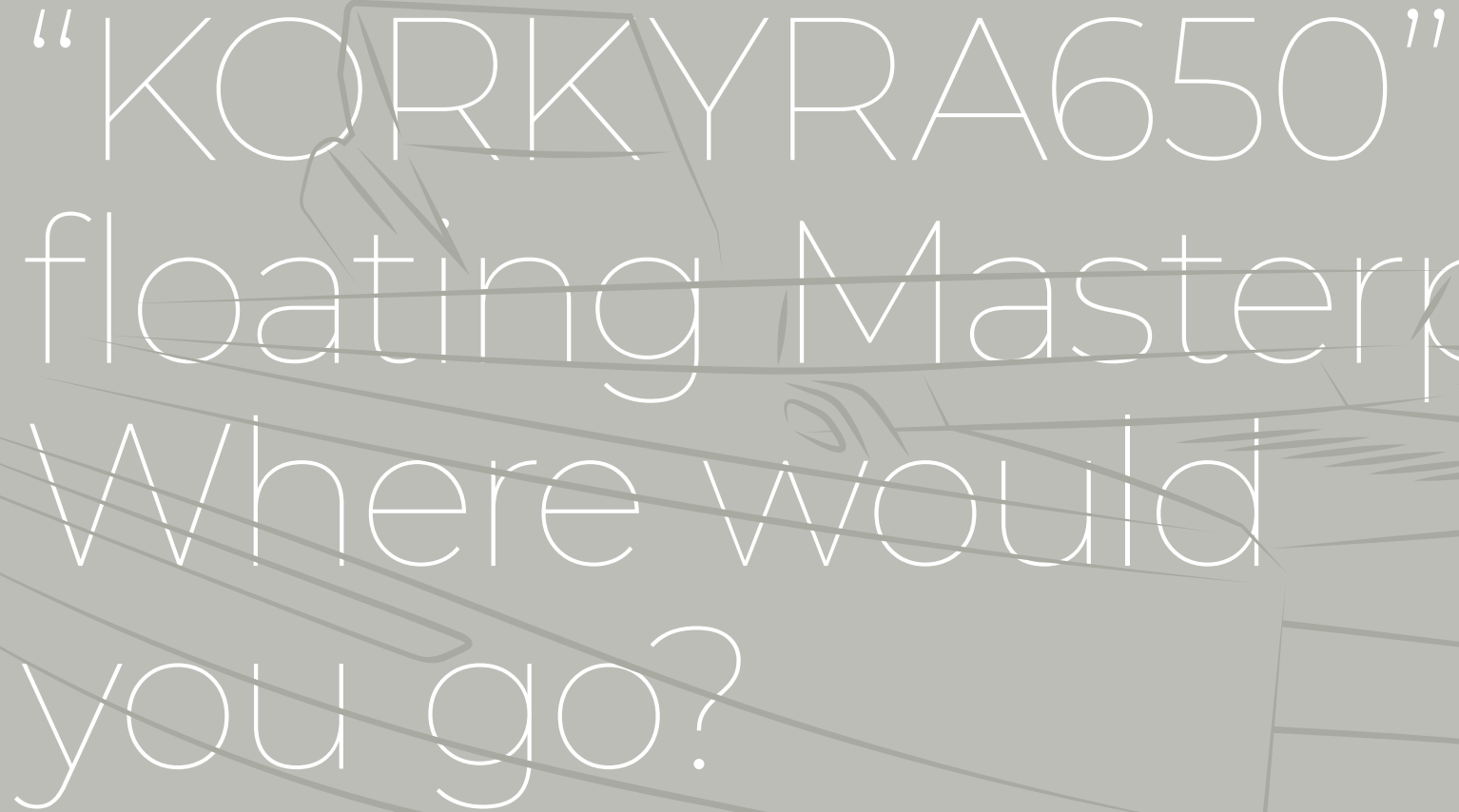


**SUSTAINABLE &
RECYCLABLE**



0 EMISSIONS



A stylized illustration of a ship's hull, shown in a light gray tone, with a speech bubble pointing towards the text. The background is a solid medium gray.

“KORKYRA650”
floating Masterp
Where would
you go?



ROTO d.o.o.
Gorička ulica 150
9000 Murska Sobota
w: nautica.roto.eu | e: nautica@roto.si